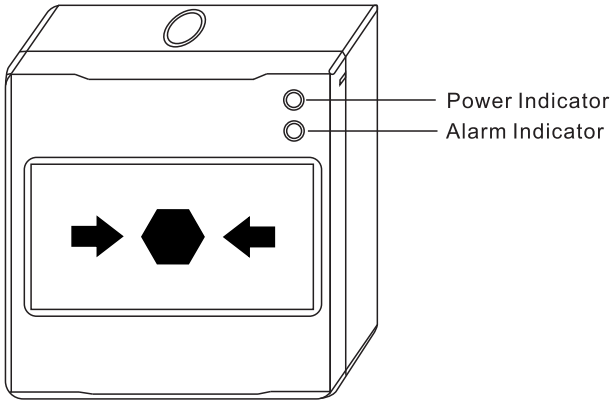


PRODUCTS DESCRIPTION

Connecting the working voltage DC 12V, the manual call point is in the normal working state while the green led flashes: When press the plastic panel, the red led stay on, it is in the alarm state. The switch is NO in the normal state and it is NC in the alarm state.



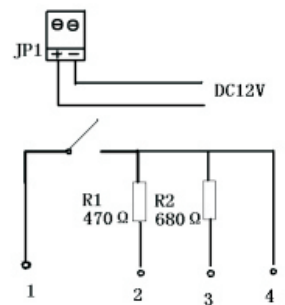
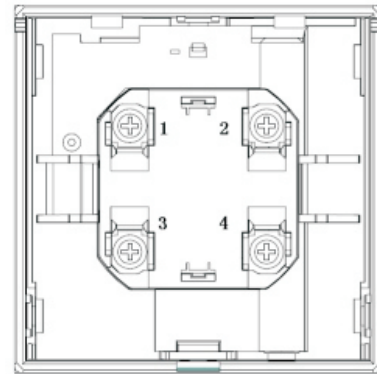
PRODUCTS INSTALLATION

- It should be installed in the obvious and easily operated place.
- The distance between the manual and the floor should be 1.3m-1.5m.

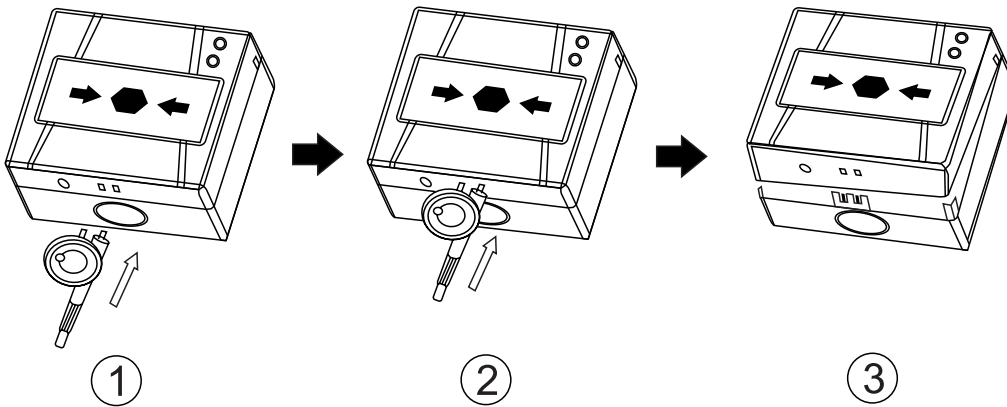
PRODUCTS FEATURE

- Rated voltage: 12-24V
- Standby current: $\leq 330\mu\text{A}$ (DC12V)
- Alarm Current: $\leq 17.5\text{mA}$ (DC12V)
- Power Indicator: Green LED
- Alarm Indicator: Red LED
- Working temperature: $-10^{\circ}\text{C} \sim +55^{\circ}\text{C}$ max 95%
- Product size: 86*86*60mm
- MADE IN CHINA

PRODUCTS WIRING



Unlock method



Activation test and reset

